



**Now on to the G-2  
Tree-Ring “Wood Kit”  
ASSIGNMENT!**

## Goals of Assignment G-3:

(1) To see “inside” different species of trees and woody shrubs

(2) To classify the wood samples in a “wood kit” into categories :

Trees that are:

(1) **Suitable** or

(2) **Unsuitable**

... for crossdating and subsequent dendrochronological analysis.

| Tree species                                         | Dendrochronological Criteria |                       | Y/N |
|------------------------------------------------------|------------------------------|-----------------------|-----|
|                                                      | Reasons FOR using            | Reasons for NOT using |     |
| Bristlecone pine<br>( <i>Pinus longaeva</i> )        |                              |                       |     |
| Fan palm<br>( <i>Washingtonia spp.</i> )             |                              |                       |     |
| Lodgepole pine<br>( <i>Pinus contorta</i> )          |                              |                       |     |
| Mesquite<br>( <i>Prosopis spp.</i> )                 |                              |                       |     |
| Mulberry<br>( <i>Morus spp.</i> )                    |                              |                       |     |
| Saguaro<br>( <i>Carnegiea gigantea</i> )             |                              |                       |     |
| Giant redwood<br>( <i>Sequoiadendron giganteum</i> ) |                              |                       |     |
| White pine<br>( <i>Pinus strobus</i> )               |                              |                       |     |

Then, for each specimen in your box, fill out reasons FOR using it and reasons for NOT using it in a dendrochronological study



Start by matching each wood specimen with a PHOTO, using LABELS on the wood to guide you

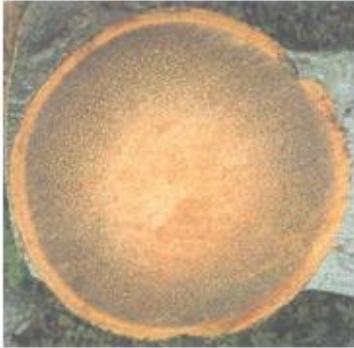
Example:  
SEGI = Giant redwood

- 1) **Match the wood** specimens in your box **with** the right tree **photo**
- 2) **Fill out the chart** for the specimens in your box
- 3) **SWAP** boxes
- 4) **REPEAT** for second box
- 5) All who participated, **sign the form** & **return the folder** with your completed G-3 form inside

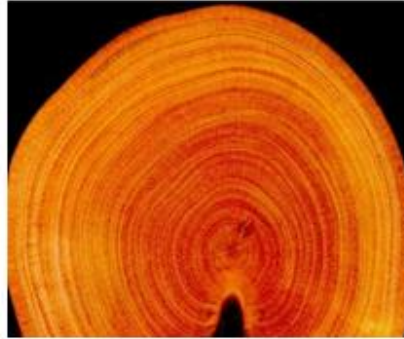


# SUMMARY OF FEATURES THAT INDICATE SUITABILITY FOR DENDROCHRONOLOGY

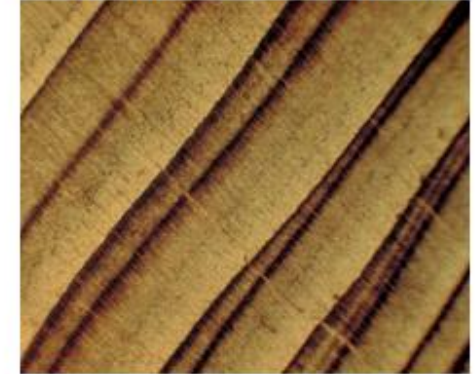
1. Has Rings:



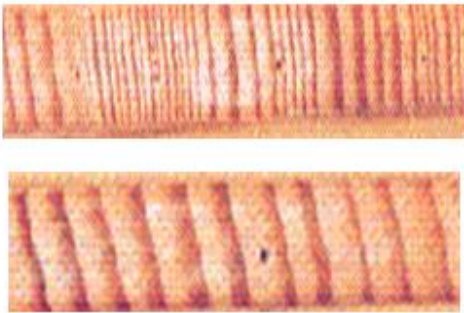
2. Distinct Ring Boundaries:



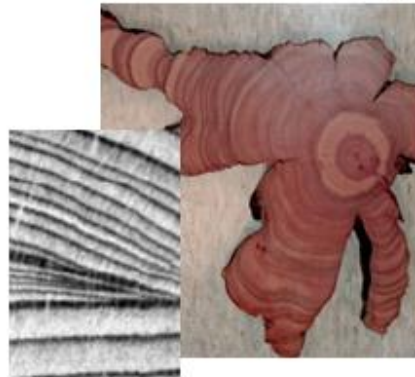
3. Rings are Annual:



4. Sensitive Growth:



5. Circuit Uniformity:



6. Long Ring Record:



**See the “Study Guides” link in D2L  
for info on the Preceptor Study  
Session on Sunday.**

**HAVE A PRODUCTIVE WEEKEND  
See you on MONDAY,  
ready for the TEST!**