

Tuesday Sep 2nd

ANNOUNCEMENTS

- (1) You'll need your **Class Notes & Clicker Device** in class today. (*Don't have them? Get them as soon as possible and bring both to class every day.*)
- (2) Your first **GRADED online Readiness Quiz (RQ-1)** based on the ATOMS Chapter in the SGC E-Text **is now posted and available to take** after you complete the corresponding **SELF TEST**.
It is due no later than **this THURSDAY @ NOON Sep 4.**
(NOTE: All RQ's are due **30 minutes** before class begins.)

Here for the FIRST TIME today? Please pick up a **Course Info Sheet & Background Form** from the table in the front of the room and **see a TA** .





ANNOUNCEMENTS (cont.)

(3) **CLICKERS /Response Devices** will be used for the first time in class today – It's a **PRACTICE DAY** today (points won't go into your Participation grade).

BUT BE READY to start using them regularly on Thursday!

Directions on **how to**
GET YOUR CLICKER or
ResponseWare License are
posted In D2 under **“Getting
Started”** and **“Clicker
Registration ‘How To’”**

Getting Started | ▾

-  To get started in our class, visit the [CHECKLIST](#) for the 1st week of class and complete the tasks listed.
-  How to register for online access to the [E-Textbook](#)
-  About the "clicker" requirement options:
[Turning Technologies Response Keypad](#) or [ResponseWare](#)
-  Class Notes Packets are NOW available in the UA Bookstore.
[Click here](#) for where to find them.

Clicker Registration "How To" | ▾ >

ABOUT YOUR TEACHING TEAM

INTRODUCTION TO GLOBAL CHANGE

Instructor: Dr. Katie Hirschboeck

**ENTER D2L
HERE**
D2L Tip Sheet

**COURSE
FAQ**

**TEACHING
TEAM**


SYLLABUS

QUICK LINKS

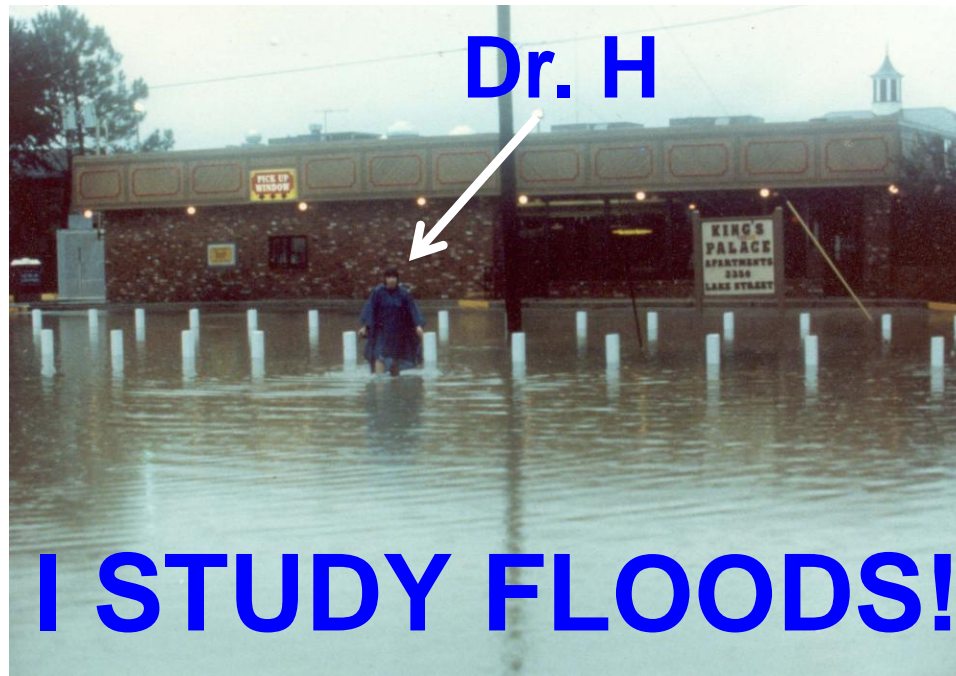
**GLOBAL
CHANGE
LINKS**

**CLASS
SUPPORT
LINKS**

**CLASS
FOLLOW UP**



Dr. Katie Hirschboeck
Assoc Professor of Climatology



**Climate Scientist, Laboratory of Tree-Ring Research &
(former chair) Global Change Graduate Interdisciplinary Program**

**Joint appointments: Hydrology & Water Resources, Atmospheric Sciences,
Geography & Regional Development, Arid Lands Resource Sciences**

(Before UA was on faculty at Louisiana State University)

**Degrees from: Univ of Wisconsin-Madison (Geography) (B.S. & M.S.)
Ph.D. University of Arizona (Geosciences)**

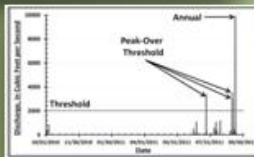
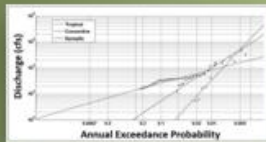
Dr H's Lab:



**ATMOSPHERIC CIRCULATION
EXTREMES**

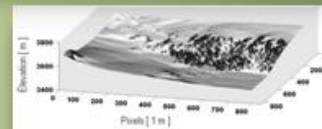
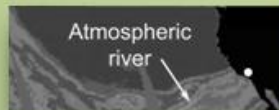


DROUGHTS

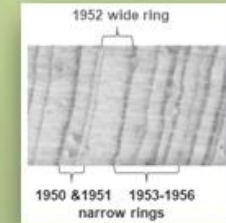


**EXTREME
VALUE
STATISTICS**

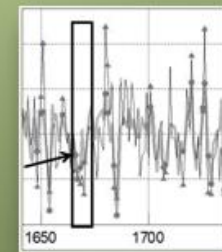
**ENHANCED
MOISTURE FLUX**



SNOW COVER



**RING WIDTH
EXTREMES**



**PAST
STREAMFLOW
EXTREMES**

EXTREME EVENTS LAB



Diana Zamora-Reyes

Hydrology and Water Resources

Main Interest:

How does climate manifest itself in the past, present, or future?

-Speleothems or cave deposits

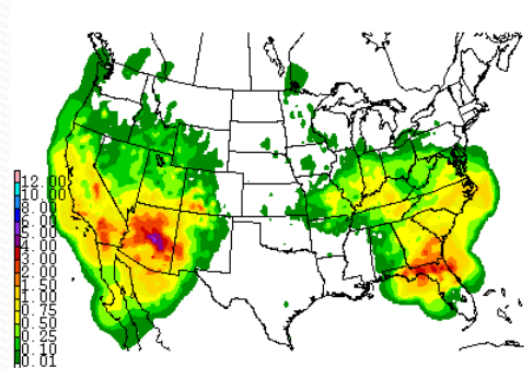
(Junior-UT Austin)

-Varves or lake deposits

(Senior-Lake Linné, Svalbard)

-Floods!

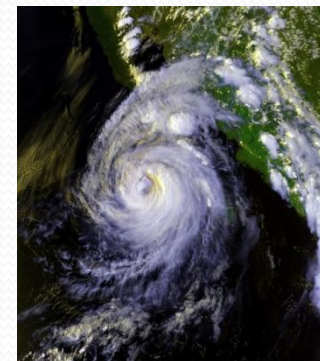
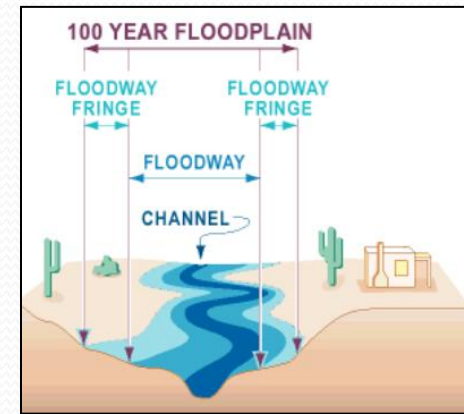
(Master's Thesis; PhD Dissertation)



Synoptic Storm



Convective Storm



Tropical Cyclone
Convective Storm

Scott Jones



PhD Major: Arid Lands Resource Sciences
Minor: Global Change



THE TEACHING TEAM

INTRODUCTION TO GLOBAL CHANGE

Instructor: Dr. Katie Hirschboeck

**ENTER D2L
HERE**
D2L Tip Sheet

**COURSE
FAQ**

SYLLABUS

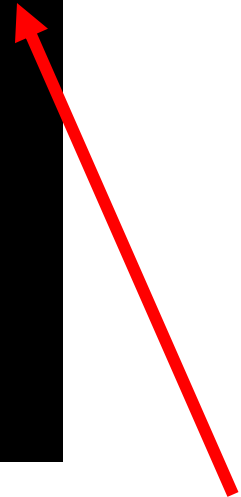

**GLOBAL
CHANGE
LINKS**

**CLASS
FOLLOW UP**

**TEACHING
TEAM**

QUICK LINKS

**CLASS
SUPPORT
LINKS**



**CONSIDER
BEING A
PRECEPTOR!**

About the Teaching Team Program & becoming a Preceptor

Weekly meetings with Dr H & the TA's to work on class activities together



Teaching Teams Program

Putting People Back Into Education



Learn the material better by helping your classmates learn

Facilitate hands on activities in class

Why should I Become a Preceptor?

- Personal involvement with your course – YOU can help make it a better course through your input
- Learn new professional and leadership skills
- Learn the material better by helping others learn
- Opportunity to excel in the course !!
- Get to know your professor & TA's as mentors and future references for applications, jobs, etc.
- Get 3 units credit (Preceptor Course)
OR Honors credit (if signed up for Sec 2)



How do I find out more?

See the PRECEPTOR SECTION
under **TEACHING TEAM** on our GC 170A WEBPAGE

Then email Dr H to make an appointment
for an interview



<http://www.ltrr.arizona.edu/kkh/natsgc/>

TODAY'S CLASS:

- **Wrap up of Time Series Graphs**
- **Start Topic #3: Review and Overview of the basics of**
MATTER & ENERGY
- **Clicker / Response Session Debut!**

POP QUIZ ON THE SYLLABUS & FAQ COURSE LOGISTICS



Syllabus



Course
FAQ



Q1: When is it OK to talk to my classmates during classtime?
[FAQ # 34](#)

Q2: When should you **begin taking RQ-1 (due **THIS Thursday**) so you are sure to finish it before the **“CUTOFF” DEADLINE?****
[FAQ # 23](#)

Q3: What should you do if you **need Dr H to sign a grade report for your program, coach, tutor, sorority, fraternity, etc.?**
[FAQ #29](#)

TRIAL RESPONSE TIME!

Practice Day: CLICKER POINTS WILL NOT BE COUNTED TODAY

Clicker



*Older clicker
is OK*

ResponseWare
Device



Open up your “APP”
or

login to: rwpoll.com

ENTER CHANNEL = 28

ENTER SESSION ID = see above

Q1. I am a . . .

A. FRESHMAN

B. SOPHOMORE

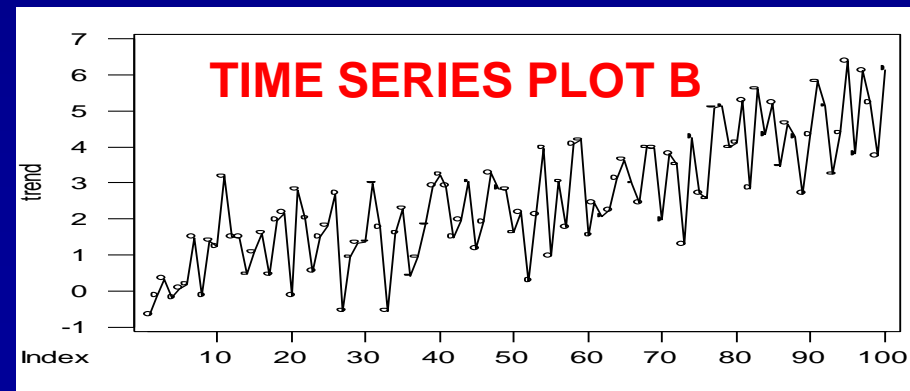
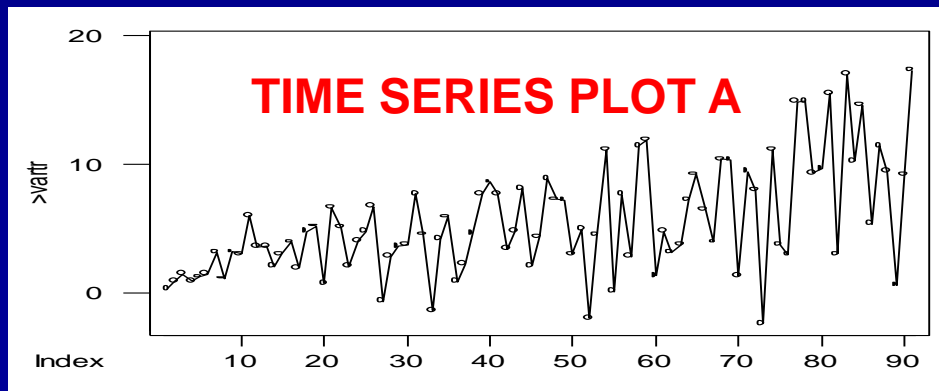
C. JUNIOR

D. SENIOR

E. OTHER

Q2. What is the difference between Time Series Plots A & B below?

- A. Plot A depicts a constant mean over time, but Plot B does not
- B. Plot A doesn't depict any trend, but Plot B does
- C. Plot A depicts increasing variance over time, but Plot B does not
- D. Plot A is periodic but Plot B is not
- E. There is no difference – they are both random plots with no trends



Q2. What is the difference between Time Series Plots A & B below?

- A. Plot A depicts a constant mean over time, but Plot B does not
- B. Plot A doesn't depict any trend, but Plot B does
- C. Plot A depicts increasing variance over time, but Plot B does not**
- D. Plot A is periodic but Plot B is not
- E. There is no difference – they are both random plots with no trends

